

Arne Lundmark, CEO/Chief Designer, Judy Lundmark, & Scott Lundmark, President



In addition to the putting surface, the course features rough turf as well as sand trap turf. Novel, optional obstacles are also available to create more interesting play.



ADVENTURE GOLF & SPORTS

Innovative Design • Ultimate Experience

A Global Leader in Miniature Golf & Game Court Design/Installation

Other fun, interactive, cost-effective entertainment attractions from AGS include: Pickleball, Shuffleboard, Bocce Ball, Croquet and other recreational courts.

Besides concrete-poured installations, AGS has long term experience installing interlocking panel system versions on rooftops, cruise ships, indoor waterparks, and other outdoor applications for amusement parks, family entertainment centers, hotels, resorts and other attractions.

(231) 922-8166

Learn more at:

AGSGolfandSports.com

© Copyright 2018, Adventures Golf & Sports

NEW!

Modular AdvantageTM Mini Golf

Looks & Feels Like a Concrete Course with Easier Install & Less Cost!



ADVENTURE GOLF & SPORTS

Innovative Design • Ultimate Experience

Modular Means Greater Profits, Less Maintenance & More Flexibility!

Adventures Golf & Sports (AGS) NEW **Modular Advantage™ Mini Golf** system uses the latest technology to give you the look and feel of a permanent concrete course with faster, less costly installation, less maintenance and options for 4,000, 4,800 or 5,400 square feet of playing surface.

Ideal for FECs, parks, campgrounds, hotels, resorts and other businesses interested in adding an entertaining, revenue-producing or amenity attraction to their facility!

EASY AS 1, 2, 3!

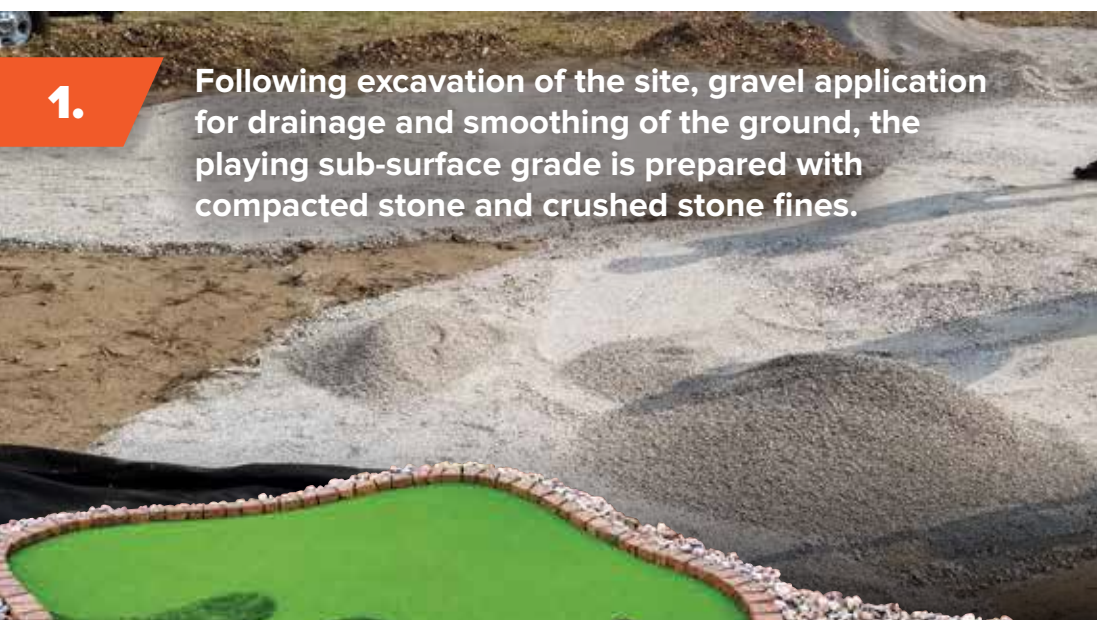


Specially created golf hole cups are used that will not break or bend like other cups.

Interlocking Contour-Ready Panel System is designed for quick, easy drainage.

- Interlocking flexible, patented panels offer speedy installation
- 5-year panel warranty with long-term life expectancy
- Will not crack or shift affecting playability
- Enables relocating the entire course if desired! Minimizes the investment risk on leased land.
- Efficient for renovation programs, often eliminating costly soil remediation.
- Owner-installed option available
- Experienced AGS crews have been installing panel systems for more than 10 years

Contact us today to discover all the advantages that will make your facility more attractive and profitable!



1.

Following excavation of the site, gravel application for drainage and smoothing of the ground, the playing sub-surface grade is prepared with compacted stone and crushed stone fines.



2.

Numbered interlocking pre-fabricated panels, cut from a design template for each golf hole, are assembled on top of the compacted stone and crushed stone fines.



3.

Edges of each hole feature large trapezoidal faux bricks permanently glued to the turf. Prefabricated simulated rock or hand-carved faux rock edges are also be available.

The system provides excellent drainage with no water ponding from rain, eliminating the need to squeegee the greens and fairways before reopening the course – a quick-dry, no mess system.